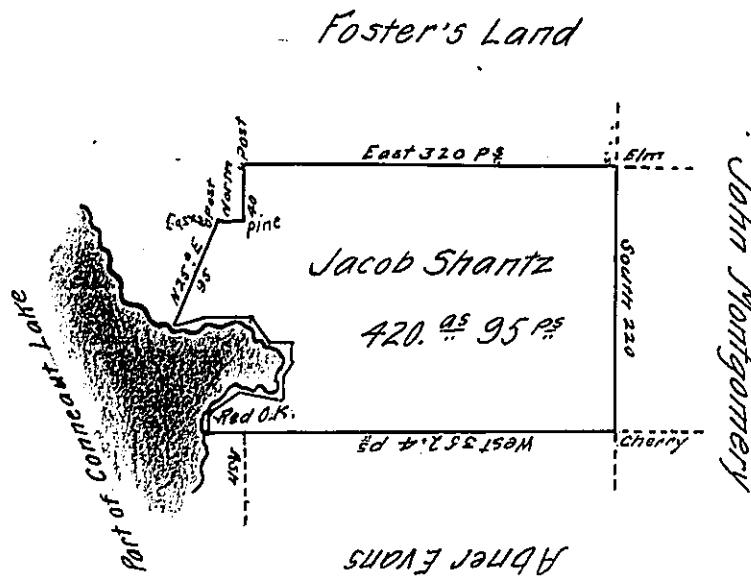


Courses and distances
along Conneaut Lake
beginning at a Red Oak

- N. 44° E. 22
- N. 34° E 18.
- S. 85° E 44.
- N. 10° E 35.
- North 10.
- N. 75° W 15.
- N. 45° W 27.
- West 45.
- S. 67 1/2° W 25
- 241



In pursuance of a Warrant for 400 Acres of land dated the 6th day of December 1802 was surveyed the 18th day of January 1803 for Jacob Shantz the above described Tract of land containing 420 Acres 95 perches and allowance of six per Cent for Roads &c Situate adjoining the Conneaut Lake in Sadsbury Township Crawford County

To Samuel Cochran Esquire
Surveyor General

William M^r Arthur D.S.

IN TESTIMONY that the above is a copy of the original remaining on file in the Department of Internal Affairs of Pennsylvania, made conformably to an Act of Assembly approved the 16th day of February 1833, I have hereunto set my hand and caused the Seal of said Department to be affixed at Harrisburg, this twenty-second day of January 1907

Hoac D. Smith
Secretary of Internal Affairs.